

## Programs + Services

### A: Primary Care – Adults

Whether you are sick, have a chronic condition, or just need a check-up, adult primary care is the foundation of your health and wellness care.

### B: Primary Care – Pediatric

Keeping children healthy is one of the biggest responsibilities of parents. From infants to teens, we provide all the pediatric care your children need including sick care, well child exams, physicals, immunizations, chronic care, and more.

### C: Primary Care – Immediate Care

A convenient walk-in option when you need to see a healthcare provider quickly. Don't wait for hours in an emergency room, receive same-day care from us.

### D: Dental Care: Children & Adolescents

Little mouths are a big deal. Untreated tooth decay can cause pain and infection that can lead to problems with eating, speaking, and overall health. Dentistry services from birth to age 20.

### E: Behavioral Health

Behavioral health and psychiatric staff provide a broad spectrum of treatment and prevention services to children and adults through integrated care, counseling, and medication management.

### F: Women's Health

Comprehensive women's health services that meet the unique needs of each woman. Includes comprehensive pregnancy care with personalized labor and childbirth plans.

### G: Health Education

Professional educators help our patients get healthy and stay healthy by teaching you what you need to know. Program includes education on wellness, chronic medical conditions, pregnancy and parenting.

### H: Immunizations

For both children and adults, immunizations are important part of preventing illness. Our care teams can help you determine what you need and administer the prescribed medication.

### I: Interim Care Program

Recuperative Care/Medical Respite for people who no longer require hospitalization but still need to heal from an injury or illness that would be exacerbated by an experience of homelessness.

### J: Violence Intervention Program

A peer violence intervention program that supports violently injured youth and community members affected by violence through mentoring and case management.

### K: Substance Use Disorder Treatment

A range of services to provide the right treatment for each individual situation, including outpatient, withdrawal management, residential, and medication-assisted treatment.

### L: Sweet Success

A health education and support program to help pregnant women with gestational diabetes deliver healthy babies.

### M: Birth & Beyond Family Resource Centers

A welcoming place offering a range of services, activities, family visitation, and support that responds comprehensively to the needs and hopes of local residents and families.

### N: Suicide Prevention

Suicide Prevention – 24/7 suicide prevention services provided via telephone, text, and chat.

### O: Housing Tenancy and Sustaining Services

Supportive services to help clients maintain safe and stable tenancy once housing is secured. Referral only.

### P: Health Entry Access Referrals Transition

Promote client success through one-on-one planning and coordination to implement an individual care plan and connection to supportive benefits and services. Referral only.

### Q: Criminal Justice - Involved Programs

Collaborative partnership with justice courts and law enforcement to reduce recidivism by helping meet the unmet healthcare needs of people who are involved with the criminal justice system. Referral only.

## Who we are.

Primary Care: 916.737.5555

Dental Care: 916.822.8958

Behavioral Health: 916.313.8433

Women's Health 916.392.2290

**WellSpace Health has provided care and support to individuals and families since 1953.**

**We offer a full range of quality medical care, dental care, behavioral health, and supportive services to everyone.**

**Medi-Cal, Medicare, and self-pay patients are welcome.**

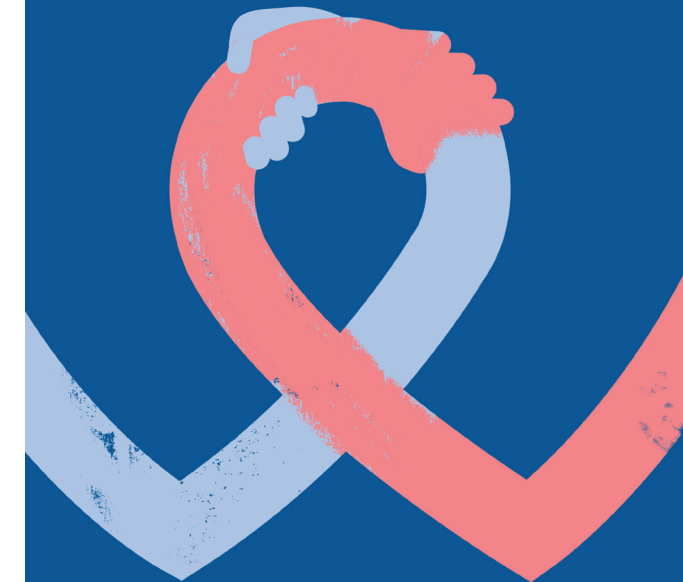
**“Everyone deserves to be seen, no matter who you are, where you come from, where you work or what place you call home. We see you.”**

*We see YOU.*



**WELLSPACE**  
**HEALTH**

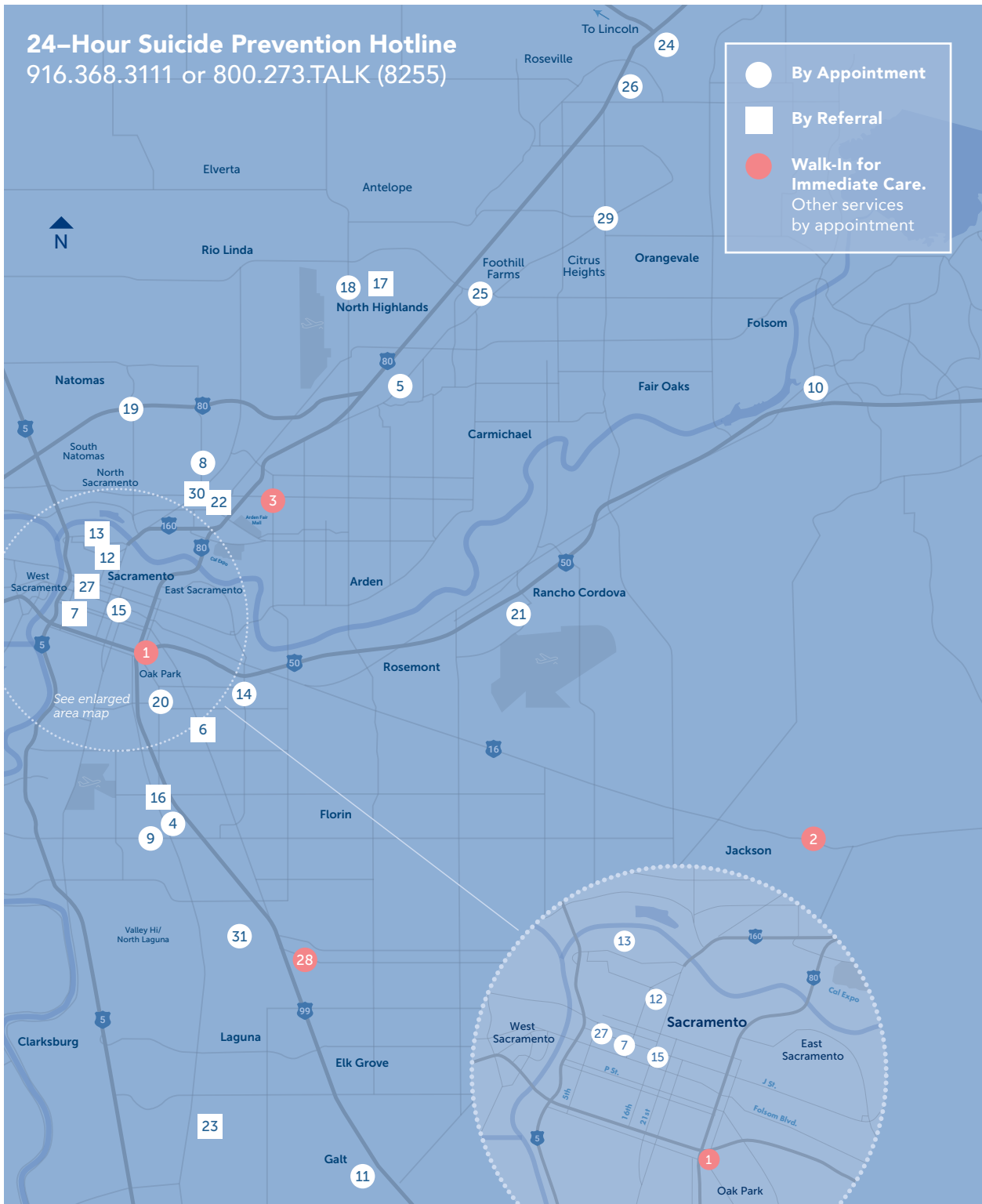
*EVERYONE deserves to be seen.*



**\*MEDI-CAL WELCOMED**  
*Self-pay discount available*

# 24-Hour Suicide Prevention Hotline

916.368.3111 or 800.273.TALK (8255)



- 1 Alhambra Community Health Center**  
2425 Alhambra Blvd., Sacramento, CA  
Services: A, B, C, E, F, G, H
- 2 Amador Community Health Center**  
11333 Prospect Dr., Jackson, CA  
Services: A, B, C, D, E, H, K
- 3 Arden-Arcade Community Health Center**  
2433 Marconi Ave., Sacramento, CA  
Services: A, B, C, E, F, G, H
- 4 Behavioral Health Center - South**  
4343 Williamsbough Dr., Sacramento, CA  
Services: E, G, K
- 5 Behavioral Health Center - North**  
4441 Auburn Blvd., Ste. E, Sacramento, CA  
Services: E, K
- 6 Boulevard Court CHC**  
\*Referral Only - Sacramento, CA  
Services: A, O
- 7 Collaborative Courts**  
\*Referral Only - Sacramento, CA  
Services: K, Q
- 8 Del Paso Heights CHC**  
3441 Marysville, Sacramento, CA  
Services: A, B, G, H
- 9 Florin CHC**  
4241 Florin Rd., Sacramento, CA  
Services: A, B, F, G, H
- 10 Folsom CHC**  
1710 Prairie City Road, Folsom, CA  
Services: A
- 11 Galt Dental Center**  
216 N. Lincoln Way #10, Galt, CA  
Services: D
- 12 Interim Care Program**  
\*Referral Only - Sacramento, CA  
Services: I, P
- 13 Interim Care Program**  
\*Referral Only - Sacramento, CA  
Services: I, P
- 14 Hiram Johnson CHC**  
3535 65th Street, Bldg. C, Sacramento, CA  
Services: D
- 15 J Street CHC**  
1820 J Street, Sacramento, CA  
Services: A, E, G, K
- 16 MLK Jr Village CHC**  
\*Referral Only - Sacramento, CA  
Services: A, O
- 17 Mutual Housing at the Highlands**  
\*Referral Only - Sacramento, CA  
Services: O
- 18 North Highlands CHC + Birth and Beyond**  
6015 Watt Ave., North Highlands, CA  
Services: B, D, E, H, L, M
- 19 Norwood CHC**  
3946 Norwood Ave., Sacramento, CA  
Services: A, B, E, F, G
- 20 Oak Park CHC**  
3415 Martin Luther King Jr. Blvd., Sacramento, CA  
Services: D, P
- 21 Rancho Cordova CHC**  
10423 Old Placerville Rd., Sacramento, CA  
Services: A, B, D, E, F, G, H
- 22 Residential Treatment Center**  
\*Referral Only - Sacramento, CA  
Services: E, K, Q
- 23 RCCC Behavioral Health Center**  
\*Referral Only - Elk Grove, CA  
Services: Q
- 24 Roseville Community Health Campus**  
5 Medical Plaza, Roseville, CA  
Services: A, E
- 25 San Juan CHC**  
5959 Greenback Ln., Citrus Heights, CA  
Services: A, B, E, G, H
- 26 Sierra Gardens CHC**  
151 N. Sunrise Ave., Roseville, CA  
Services: B, F, G
- 27 7th & H Housing Community**  
\*Referral Only - Sacramento, CA  
Services: O
- 28 South Valley Community Health Campus**  
8231 E. Stockton Blvd., Sacramento, CA  
Services: A, B, C, D, E, H, J, L
- 29 Sunrise CHC**  
7777 Sunrise Blvd., Citrus Heights, CA  
Services: A, B, D, E, G, H
- 30 Withdrawal Management Center**  
\*Referral Only - Sacramento, CA  
Services: E, K, Q
- 31 Women's Health Campus**  
7601 Hospital Drive, Ste. 104b & 250  
Sacramento, CA  
Services: F, G

See reverse for service key.